

# RECORD DRAWINGS

PROPOSED

COMPLETION

WORK ORDER NO. 30005

SWEETWATER AUTHORITY AT 15 E. Oxford St C.V.

MAP NO. \_\_\_\_\_ MAP CO-ORDINATES \_\_\_\_\_ TAX DISTRICT \_\_\_\_\_

MGR \_\_\_\_\_ 20 \_\_\_\_\_  
 COMPLETED DATE OR RETIRED 11-12-08

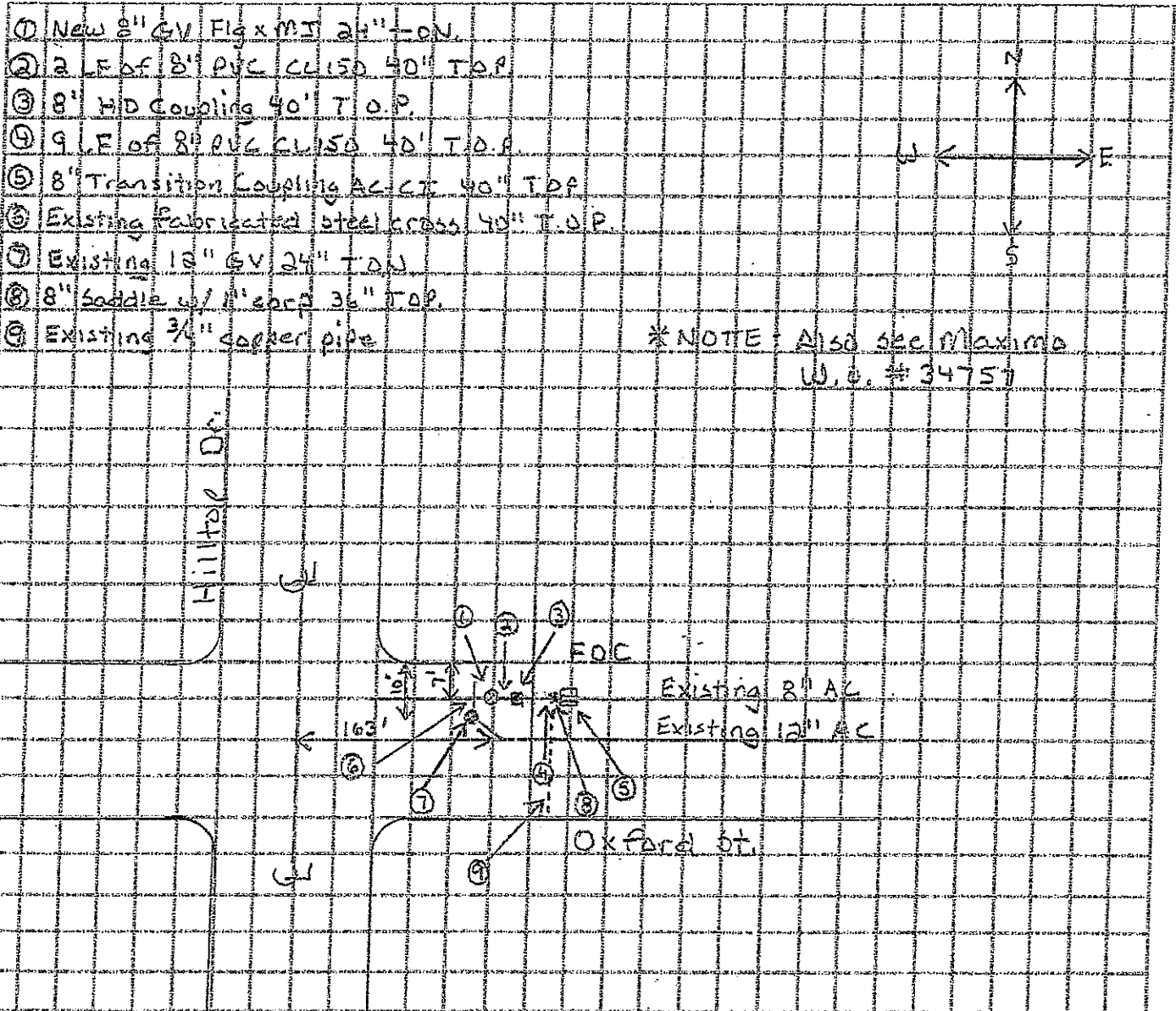
TRENCH AVG DEPTH \_\_\_\_\_ AVER. WIDTH \_\_\_\_\_ KIND SOIL \_\_\_\_\_ KIND ROCK \_\_\_\_\_

PAVING KIND \_\_\_\_\_ LENGTH CUT \_\_\_\_\_ WIDTH CUT \_\_\_\_\_

OVERALL LENGTH OF MAINS INSTALLED \_\_\_\_\_ SIZE \_\_\_\_\_ AND KIND OF PIPE \_\_\_\_\_

OVERALL LENGTH OF MAINS REMOVED  \_\_\_\_\_ SIZE \_\_\_\_\_ AND KIND OF PIPE \_\_\_\_\_  
 ABANDONED

REMARKS \_\_\_\_\_ RELATED OR INVESTMENT WORK ORDER NO. \_\_\_\_\_  
 RETIREMENT



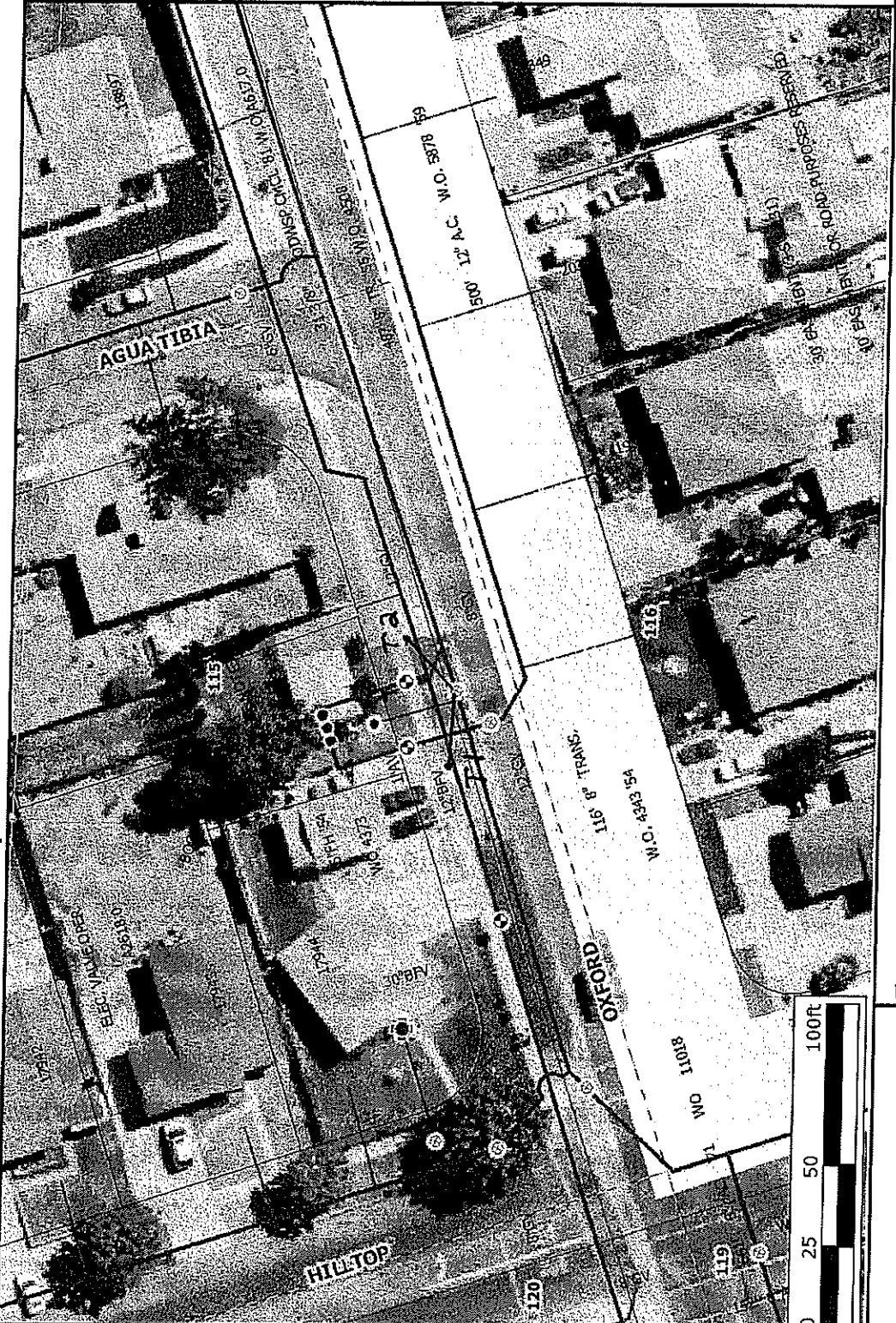
\*NOTE Also see Maximo  
 W.O. # 34757

PAVING KIND \_\_\_\_\_ B.P. \_\_\_\_\_ VALVE REGISTER \_\_\_\_\_ MAP \_\_\_\_\_

11 = 30'  
T2 = 29'

T1 = NW corner of grass parkway  
T2 = NE corner of grass parkway

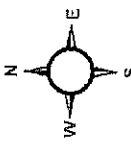
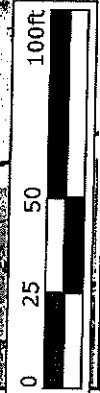
# 15 Oxford St



Legend	
<input type="checkbox"/>	Selected Features
	Tank
	Fire Hydrant
	FH
	FHOSE
	FRISER
	PPH
	Valve
	AV
	BFV
	BOV
	GV
	ZV
	Pump Station
	Main
	Misc. Lateral
	Service Lateral
	Road
	Easement
	Quarter Section
	Parcels / Pressure Zone
	sweet2.sid
	Pressure Zone
	Bonita BelAire
	Bonita Bluffs Hydro
	Bonita Highlands
	Gravity
	Halecrest
	Halecrest Hydro

The parcel or road data shown on this map is proprietary information from SANGIS. The use of this information is pursuant to sublicense agreement only. Any resale or relicensing of this information is prohibited, except in accordance with such sublicensing agreements. ([www.sangis.org](http://www.sangis.org))

**WARNING:** Location of water facilities are approximate only, based on record information. For a more accurate location, water facilities must be field located. Call U.S.A. @ 1-800-422-4133 two days prior to excavation. Or call Sweetwater Authority @ (619)420-1413.



Printed: 11/13/2008 6:12:55 AM

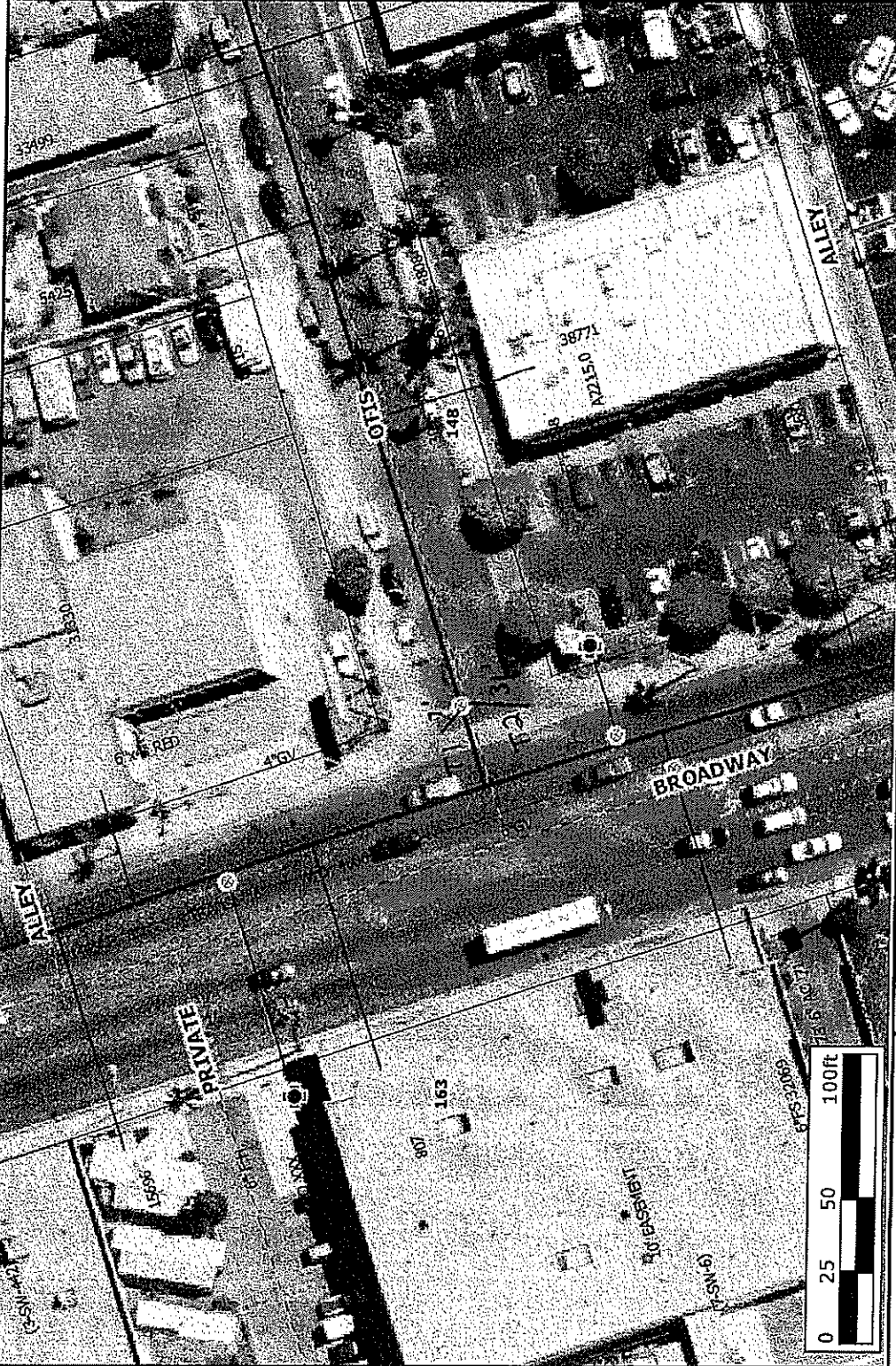


Powered By GeoSmart.net

# Broadway & Otis

W.O. # 31217

T1 = 7'  
T2 = 31'



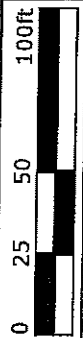
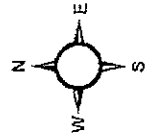
Legend	
	Selected Features
	Tank
	Fire Hydrant
	PH
	FHOSE
	FRISER
	PFH
	Valve
	AV
	BFV
	BOV
	GV
	ZV
	Pump Station
	Main
	Misc. Lateral
	Service Lateral
	Road
	Easement
	Quarter Section
	Parcels / Pressure Zone
	sweet2.sid
	Pressure Zone
	Bonita BelAire
	Bonita Bluffs Hydro
	Bonita Highlands
	Gravity
	Halecrest
	Halecrest Hydro



Powered By GeoSmart.net

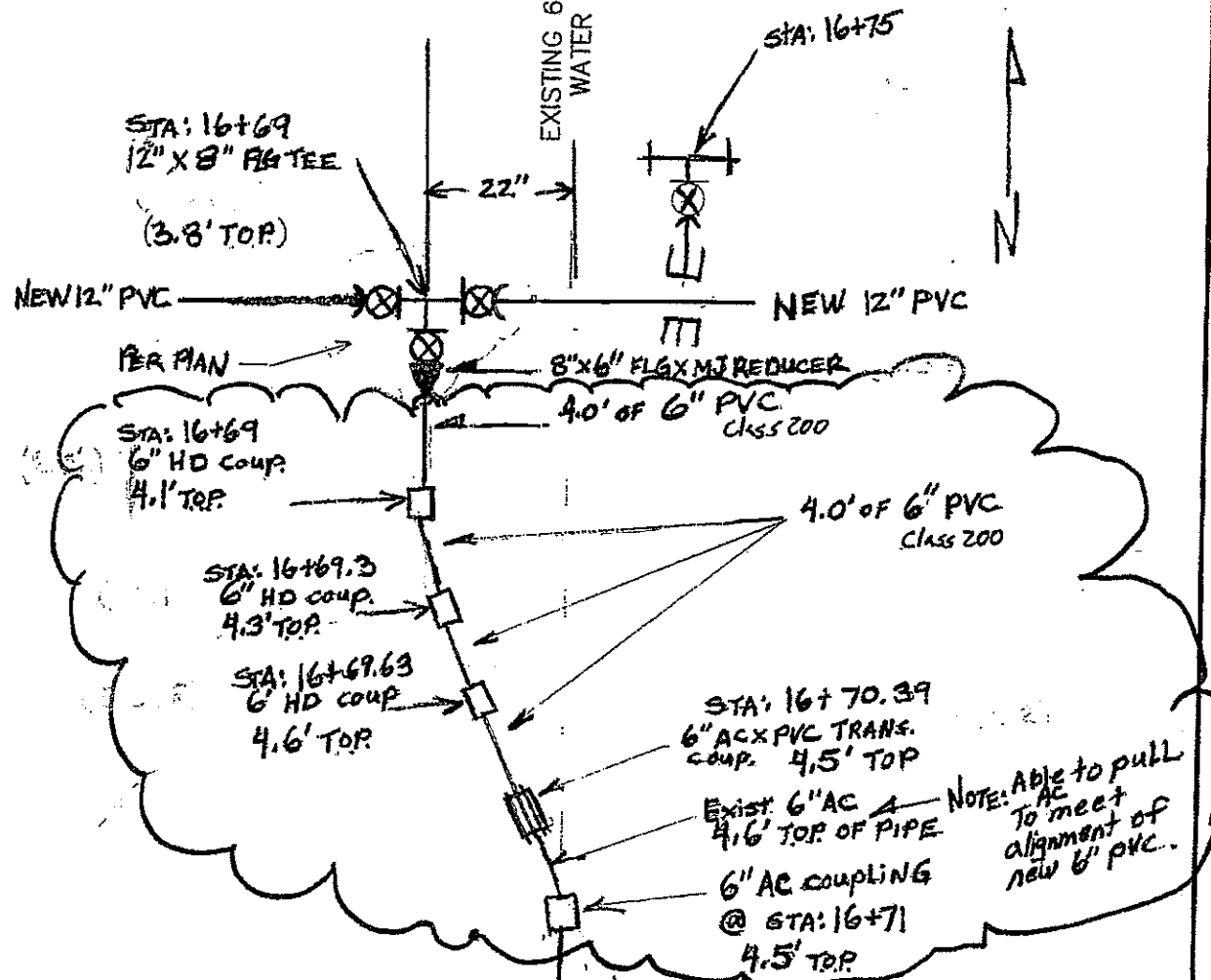
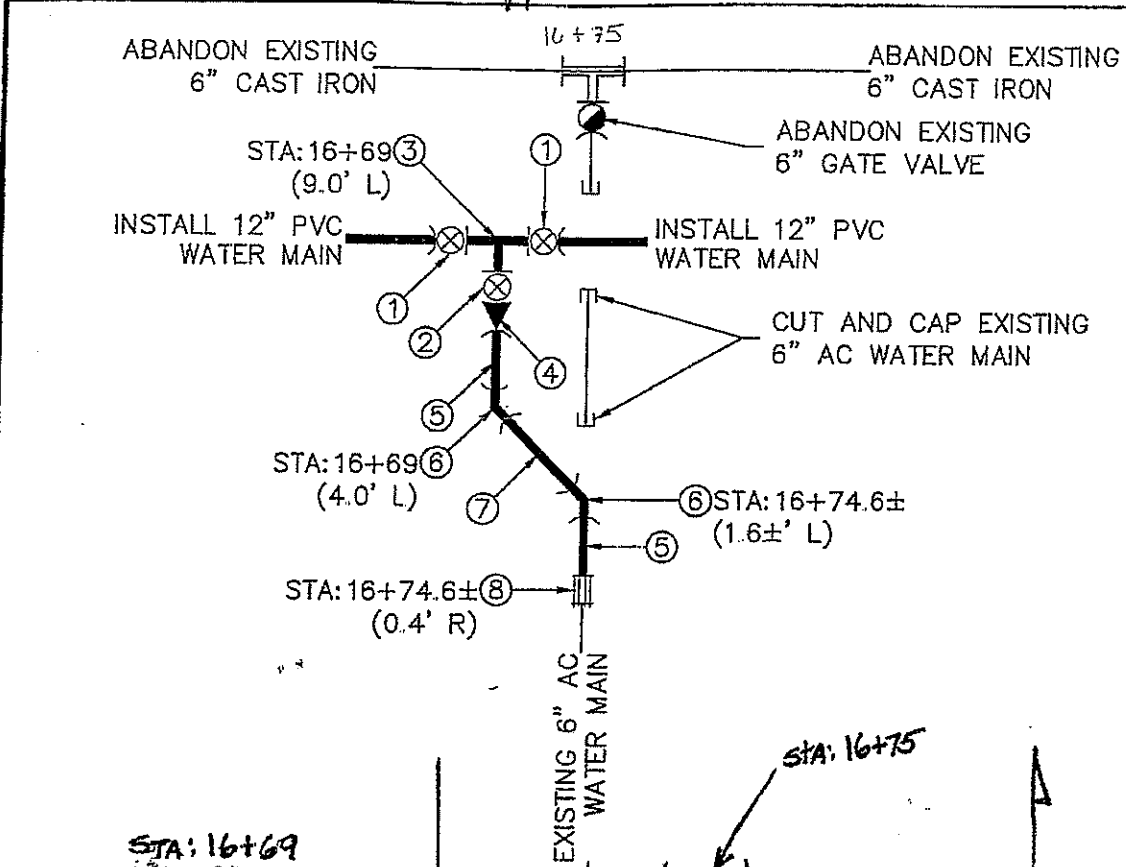
The parcel or road data shown on this map is proprietary information from SANGIS. The use of this information is pursuant to sublicense agreement only. Any resale or relicensing of this information is prohibited, except in accordance with such sublicensing agreements. ([www.sangis.org](http://www.sangis.org))

**WARNING:** Location of water facilities are approximate only, based on record information. For a more accurate location, water facilities must be field located. Call U.S.A. @ 1-800-422-4133 two days prior to excavation. Or call Sweetwater Authority @ (619)420-1413.



Printed: 9/4/2008 3:33:31 PM

# Appendix "B"



NOTE: Able to pull to AC to meet alignment of new 6' PVC.

**RECORD DRAWING EXAMPLE**