

H. R. LABOUNTY SAFETY AWARD PROGRAM

NOMINATION FORM



Agency: Crescenta Valley Water District

Employee Nominated:

Name: Bryan Jones

Job Classification: Supervisor

Reason for Nomination:

Bryan had an idea by using an engine hoist we could safely remove a 6" flow control valve from inside a well site. By using this technique we possibly prevented an injury, we will now use this technique every time we have to work inside a well site that has an enclosure. After removal of the large heavy valve it was set-down on a flat dolly and rolled outside to where the backhoe could safely complete the lifting into the truck. From this point moving forward this is our new standard operating procedure, great job Bryan.

Nominated by: Dennis Maxwell - Superintendent

Signature: *Dennis Maxwell*

Date: December 7, 2016

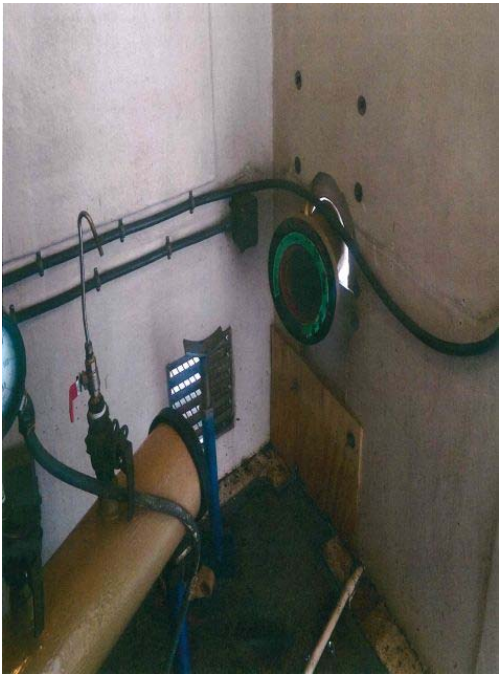
General Manager: *Thomas Love*

Date: 12/7/16

Please email this form with supporting documents and digital photos to tlofing@acwajpia.com or mail to:

ACWA JPIA
P.O. Box 619082
Roseville, CA 95661-9082
FAX: (916) 774-7040





Terry Lofing

From: Lee Patton
Sent: Thursday, February 23, 2017 6:52 PM
To: Terry Lofing
Subject: Crescenta Valley WD - HR LaBounty Submission #5



Terry: Please add this to the submission. Thanks.



Lee S. Patton, CSP, CPDM, CEAS I & II

ACWA JPIA

Senior Risk Management Advisor

(818) 414-7382 (Cell)

lpatton@acwajpia.com | acwajpia.com

From: Dennis Maxwell [mailto:dmaxwell@cvwd.com]

Sent: Friday, January 27, 2017 5:11 AM

To: Lee Patton <lpatton@acwajpia.com>

Subject: Re: Safety Award Submission

Lee,

This is used on a case by case basis, it will not work at every pump house. We set it near the entry with the backhoe and then push it in by hand to the final position. I do like the thought you have on larger tires and we will definitely visit this option.

Thanks,

Dennis Maxwell Jr
Operations and Maintenance Superintendent
Crescenta Valley Water District
3730 Glenwood Ave.
La Crescenta, Ca 91214
dmaxwell@cvwd.com
818-249-2185 EXT. 3108
818-445-1721 CELL (24 hours)
818-249-8752 FAX

> On Jan 26, 2017, at 10:59 PM, Lee Patton <lpatton@acwajpia.com> wrote:

>

> Dennis:

>

> I really like this submission. Your pictures do not provide the clarification I'm looking for. I see the backhoe with the engine hoist in the parking lot. I then see the pump house with its door open. Did you have to locate the backhoe near the door, and then extend the engine hoist through the doorway? The backhoe could not reach and angle the engine hoist through the doorway from its location in the parking lot? Will you have the same access

at all your pump houses?

>

> Also, what about bigger wheels on the dolly and a handle? Just a thought.

>

> [img0]

>

> Lee S. Patton, CSP, CPDM, CEAS I & II

> ACWA JPIA

> Senior Risk Management Advisor

> (818) 414-7382 (Cell)

> lpatton @acwajpia.com<<mailto:your%20username@acwajpia.com>> |

acwajpia.com<<http://www.acwajpia.com/>>

>

> <image001.jpg>

> <5-Crescenta Vly. WD, B#5.pdf>

This email has been scanned for email related threats and delivered safely by Mimecast.
For more information please visit <http://www.mimecast.com>
