

NOMINATION FORM



H. R. LABOUNTY SAFETY AWARD PROGRAM

AGENCY: Helix Water District

ERGO-LPP

Employee Nominated:

Name: Larry Moon

Job Classification: Equipment Repair Technician

Reason for Nomination: Design and Fabrication of Dolly and Electric Lift for Gas Powered Soil Compactor (Whacker)

The District's gas powered soil compactors (whackers) are stored and transported on the back bumper of our crew trucks. Lifting, lowering, and transporting an approximately 180-pound whacker from the truck to the excavation presents the potential for a serious strain injury. Prior to fabrication of the electric lift, two employees were needed to lift and lower the whacker from the bumper and maneuver it to and from the work location.

We've seen a number of whacker lift designs submitted to the H.R. LaBounty Safety Award Program. Larry Moon took his design and fabrication several steps further:

- First, the whacker is secured to a custom-made dolly which is equipped with a latch on the top of the handle which keeps the whacker secure on the dolly. The dolly alone was a great improvement as it makes it extremely easy to roll the whacker to the edge of the excavation.
- Second, the whacker and dolly are secured to a hinged cradle which swings out when the unit needs to be lifted or lowered from the bumper mount. During transport the cradle is secured to the bed of the truck with a locating pin at the top and a lock at the bottom.
- Third, the lifting mechanism is electrically operated with the push of a button. The button is a momentary switch so the lift will not operate without someone pressing the button.
- Three other safety features are a built in overload clutch; an automatic shut-off if the lift makes contact with any object while going down; and a notch/pin combination that keeps the whacker from tipping while on the lifting cradle.

Larry worked diligently on refining his design for this new device. He initially used a cable drive and found that a linear actuator would be more reliable. He came up with several designs for how to secure the cradle from swinging when the truck was being driven.

Helix field staff is extremely happy with the final product. Not only does this device reduce the potential for strains, it reduces the potential for crushing injuries if someone were to drop the whacker during manual moving. It also makes jobs more efficient because only one person is needed to get the whacker from the truck to the excavation. Finally, it extends the life of the whacker because the equipment is not being dragged along the asphalt.

Please see attached photos.

Nominated by:

Michael Schuff, Construction Supervisor

Signature:

Michael Schuff

Date:

7/16/14

Reviewed by:

Doug Emery, Facilities Supervisor

Signature:

Doug Emery

Date:

7.16.14

General Manager:

Carlos V. Lugo

Signature:

Carlos V. Lugo

Date:

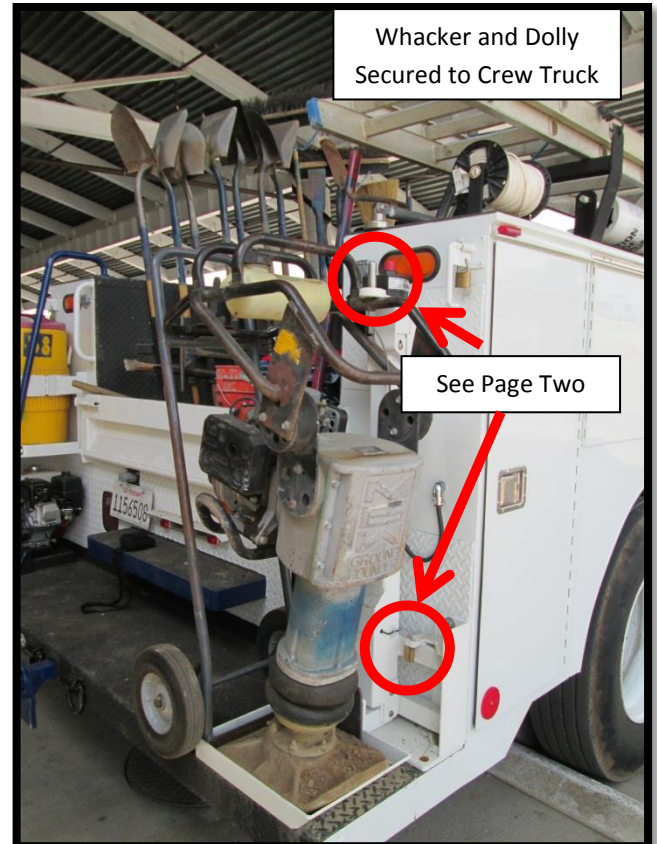
7/16/2014

Please attach supporting documents and/or digital photos and E-mail to: tlofing@acwajpia.com

**LARRY MOON- HELIX WATER DISTRICT
DOLLY AND ELECTRIC LIFT FOR WHACKER
H.R. LABOUNTY SAFETY AWARD NOMINATION**

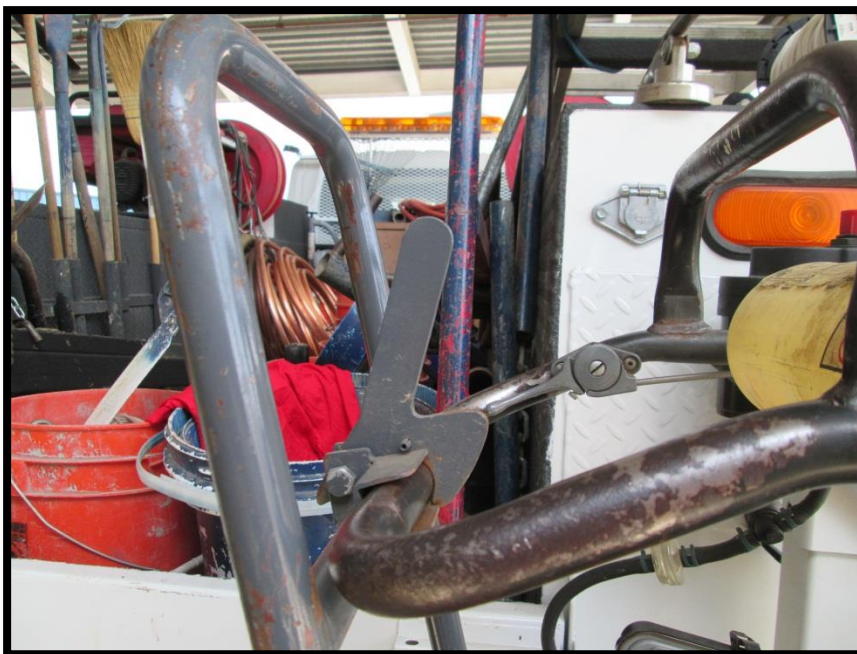


Whacker/Dolly
Cradle and Lift
Arm



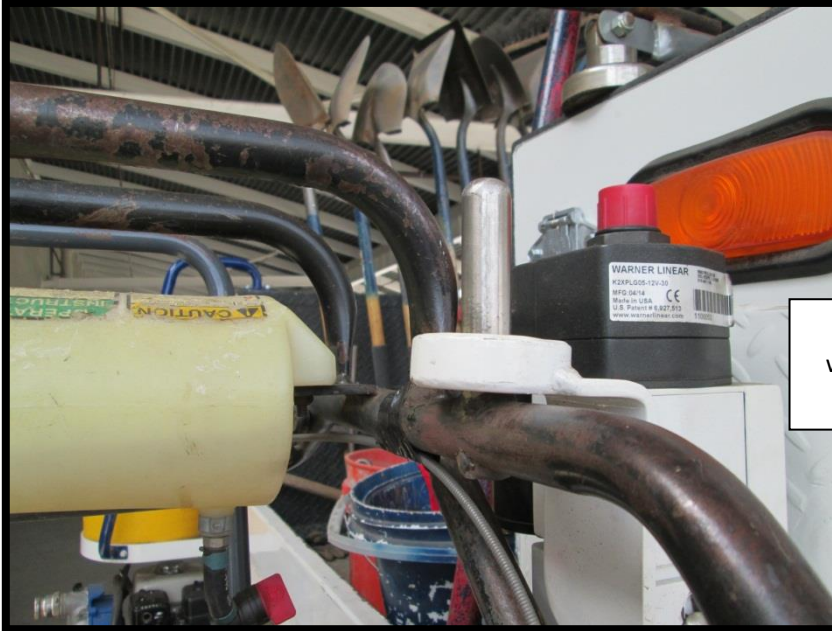
Whacker and Dolly
Secured to Crew Truck

See Page Two



Whacker secured to dolly

**LARRY MOON- HELIX WATER DISTRICT
DOLLY AND ELECTRIC LIFT FOR WHACKER
H.R. LABOUNTY SAFETY AWARD NOMINATION**



Locator Pin fabricated on
whacker dolly keeps cradle
hinge closed



Lock keeps hinge closed

**LARRY MOON- HELIX WATER DISTRICT
DOLLY AND ELECTRIC LIFT FOR WHACKER
H.R. LABOUNTY SAFETY AWARD NOMINATION**

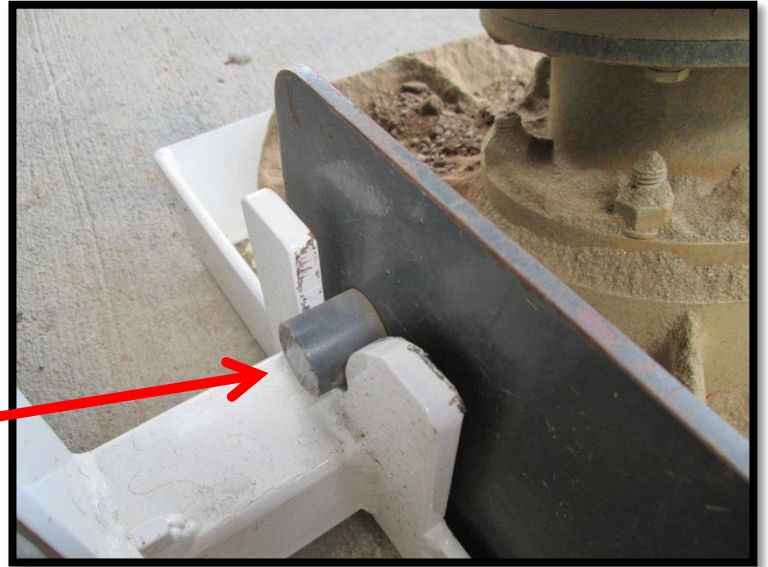
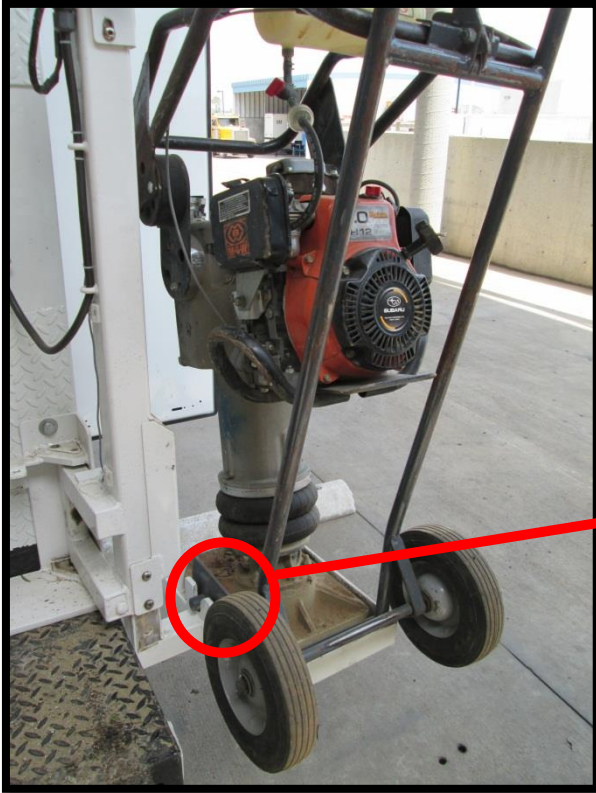
Lift rotates to conveniently
lower to ground



With a press of a button,
whacker lowers/lifts



**LARRY MOON- HELIX WATER DISTRICT
DOLLY AND ELECTRIC LIFT FOR WHACKER
H.R. LABOUNTY SAFETY AWARD NOMINATION**



Notch in cradle
corresponds with tab on
dolly to keep whacker
from tipping