

# H. R. LABOUNTY SAFETY AWARD PROGRAM NOMINATION FORM

OPS-CONST  
ERGO-FALLS



Agency: Big Bear Municipal Water District

Employee Nominated:

Name: John Tuttle

Job Classification: Facility Technician

Reason for Nomination: Corrected unsafe conditions on own initiative

Nominated by: David Henderson Lake Operations Supervisor

Signature: *David Henderson*

Date: 2/20/2014

General Manager: Scott Heule

Date: 2/20/2014

Please attach supporting documents and/or digital photos and email to:

[tlofing@acwaipia.com](mailto:tlofing@acwaipia.com)

ACWA/JPIA  
P.O. Box 619082  
Roseville, CA 95661-9082  
FAX: (916) 774-7040

The Big Bear Municipal Water District uses a 30' pontoon boat with a crane on the lake for different maintenance duties. (Photo 1).

One of the jobs the crane is used for is pulling dock poles from our floating docks when they need to be moved. At times the poles can become difficult to pull and the boat tips towards the pole as pressure is added to the crane to try and free the pole making the boat an unstable platform to work on.

The first attempt to solve this problem resulting in creating a heavy steel brace constructed of a pipe with a saddle and foot (Photo 2) to keep the boat from tipping and also stabilize the crane and boat while pressure was applied to pull the dock pole. The saddle of the brace was placed under the crane with the foot being placed on the dock. Although this provided additional stability, once a dock pole pulled free the heavy steel brace would fall or shoot to the side putting the workers in danger.

This winter, Facilities Technician John Tuttle took it upon himself to create a safer working environment by building a new style custom bracing device that is not only adjustable for different dock heights, but also can be easily attached to the end of the crane. (Photos 3 and 4). The bracket where the brace attaches to the crane is secured by a custom locking lever. (Photos 5, 6 and 7). Now, when a dock pole suddenly

comes loose with all tension on the crane and brace suddenly relaxed, the bracing device stays with the crane and keeps the workers from the danger of being hit by an unsecured brace.

PHOTO 1  
PONTON BOAT  
WITH CRANE  
1



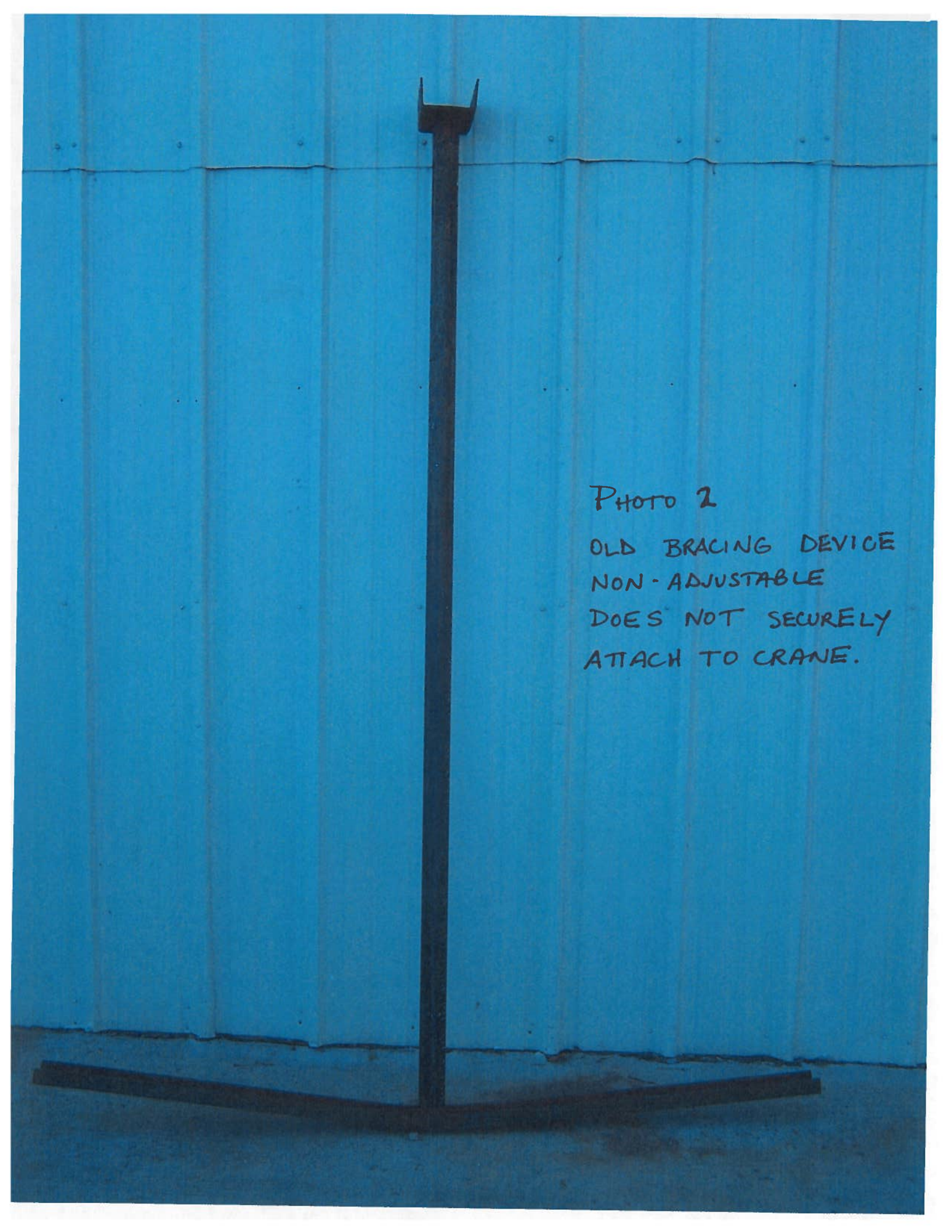
A tall, dark metal post stands vertically against a blue corrugated metal wall. The post has a hook-like top with two small protrusions. The wall has a horizontal seam across the middle. The floor is a light-colored, flat surface.

PHOTO 2

OLD BRACING DEVICE  
NON-ADJUSTABLE  
DOES NOT SECURELY  
ATTACH TO CRANE.





PHOTO 4

NEW  
DEVICE  
LOCKED  
TO  
CRANE

PHOTO 5  
LOCKING DEVICE  
OPEN





PHOTO 6

NEW  
BRACE  
LOCKED ON  
CRANE

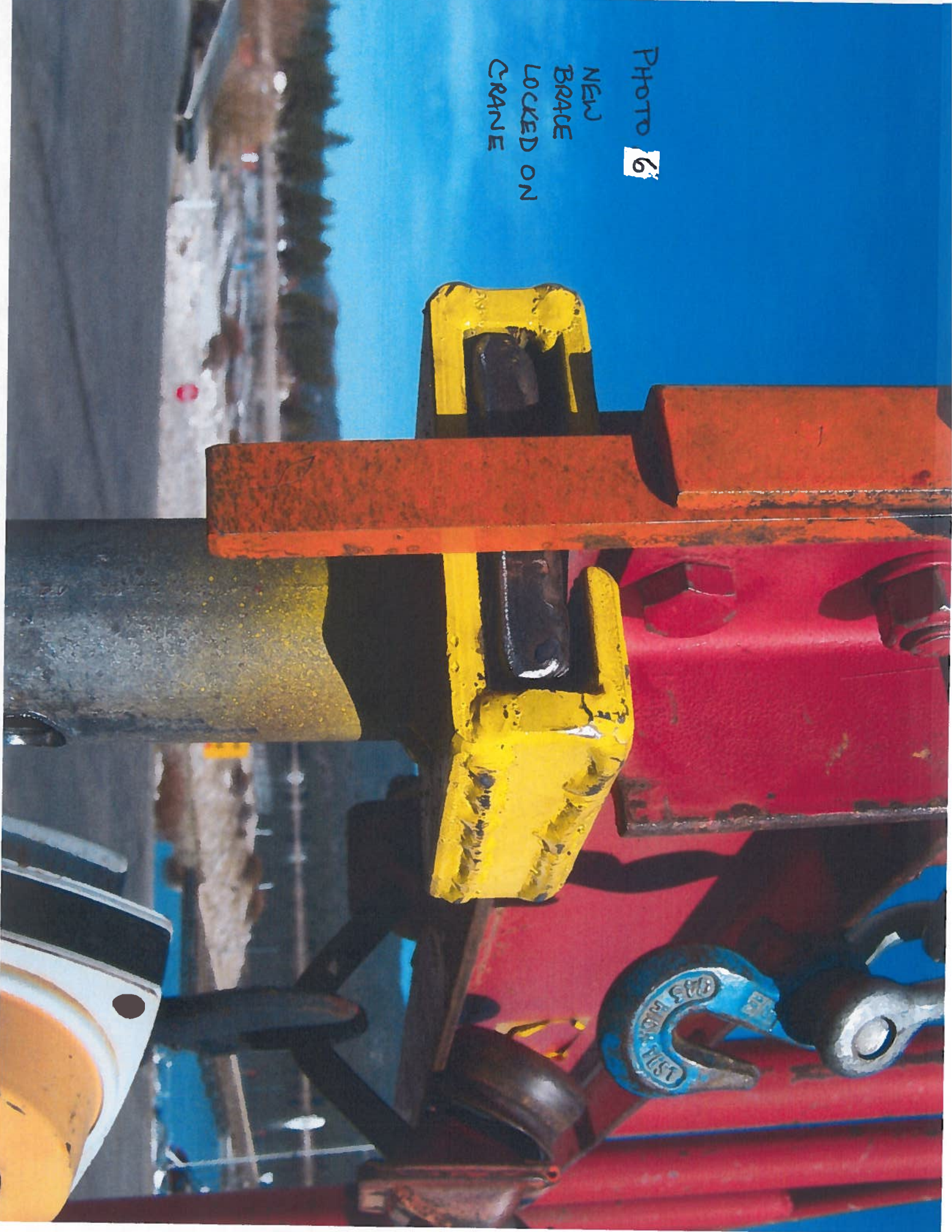


PHOTO 7

LOCKING DEVICE  
CLOSED  
AND  
ATTACHED TO  
CRANE

