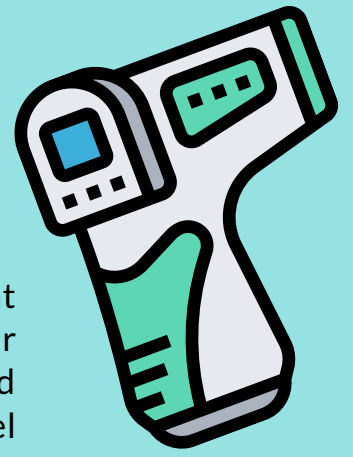


TEMPERATURE CHECKS



Employees are encouraged to self-monitor their temperatures at home first. Infrared Thermometers will be placed at stations near first aid supplies and at all District facilities. Employees should self-monitor their temperatures when starting work or if they feel ill during the workday. On-site managers should send employees home should they become ill during the day. If employees have a temperature of 100.4 or more, they should go home.

1

TEMPERATURE SELF-CHECK

Please self-check your temperature prior to coming to work. Employees that have a temperatures of 100.4 or higher as well as COVID-19 related symptoms should stay home.

2

COVID-19 SCREENING QUESTIONNAIRE

To keep you and all our employees safe, we are following local health department recommendations and requiring that every employee be assessed for COVID-19 symptoms and risk factors each day before entering our facility. Your manager will be asking each and every employee a series of questions prior to starting work. Should you answer "YES" to any of the questions, we kindly ask that you return home, and contact your healthcare professional.

3

DISTRICT INFRARED THERMOMETERS

When arriving at a District site, employees must self-check their temperature utilizing a District infrared thermometer. Employees that have a temperature of 100.4 or higher as well as COVID-19 related symptoms should go home.

4

BEFORE USING INFRARED THERMOMETER

- Wash hands appropriately.
- Don gloves
- Wipe thermometer with alcohol wipe and throw in trash receptacle;

5

UTILIZING INFRARED THERMOMETER

- Turn on thermometer
- Hold thermometer within 1 inch of the forehead and aim at the center (do not touch to skin);
- Start measuring with the press of the button (only button)
- The thermometer will vibrate when complete (within 1 second)

6

DISINFECTING MEASURES POST INFRARED THERMOMETER USAGE

- Wipe thermometer with alcohol wipe, and throw wipe in trash receptacle;
- Put the thermometer down;
- Disinfect the station with spray and wipe with disposable towels;
- Doff gloves appropriately and throw in trash receptacle;
- Wash hands appropriately.

7

INFRARED THERMOMETER STATIONS

Each Infrared Thermometer Stations are supplied with:

- An infrared thermometer
- Nitrile gloves (medium and large sized)
- Disinfectant spray
- Disposable towels
- Alcohol wipes
- Backup set of batteries for the thermometer