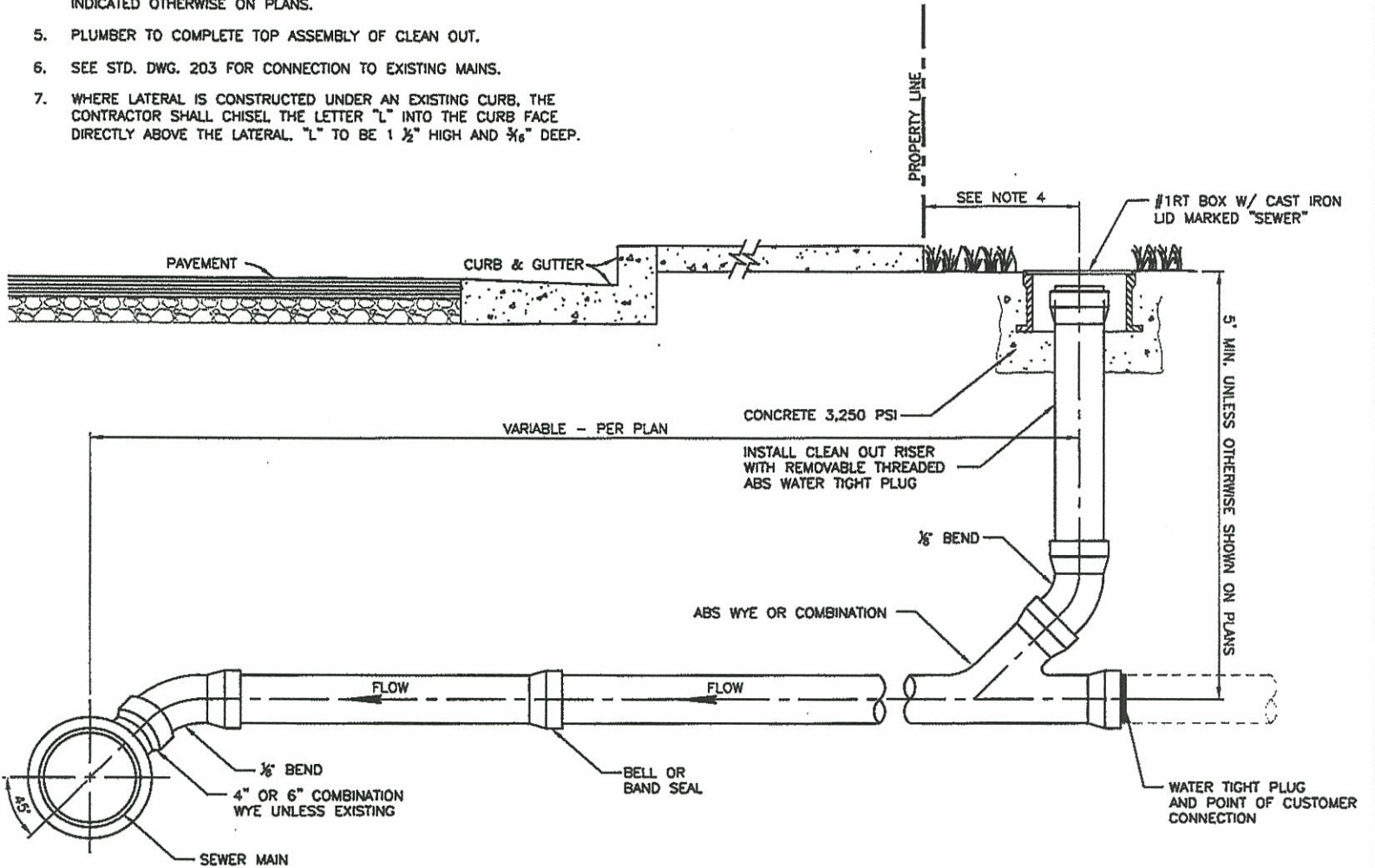


▲			
▲			
▲			
REV.	DESCRIPTION	DATE	APP'D

NOTES:

- SEWER LATERAL SHALL HAVE MINIMUM SLOPE OF 1/8" PER FOOT.
- SEWER LATERALS SHALL BE SAME MATERIAL AS SEWER MAIN UP TO WYE AT PROPERTY LINE.
- SIZE DETERMINED PER UPC SECT. 403, TABLE 4-3.
- LOCATE CLEANOUT BOX ON OR BEHIND PROPERTY LINE UNLESS INDICATED OTHERWISE ON PLANS.
- PLUMBER TO COMPLETE TOP ASSEMBLY OF CLEAN OUT.
- SEE STD. DWG. 203 FOR CONNECTION TO EXISTING MAINS.
- WHERE LATERAL IS CONSTRUCTED UNDER AN EXISTING CURB, THE CONTRACTOR SHALL CHISEL THE LETTER "L" INTO THE CURB FACE DIRECTLY ABOVE THE LATERAL, "L" TO BE 1 1/2" HIGH AND 3/8" DEEP.



Cucamonga Valley Water District
SEWER LATERAL



APPROVED BY:

JOHN POSNER P.E., DIRECTOR OF OPERATIONS & ENGINEERING

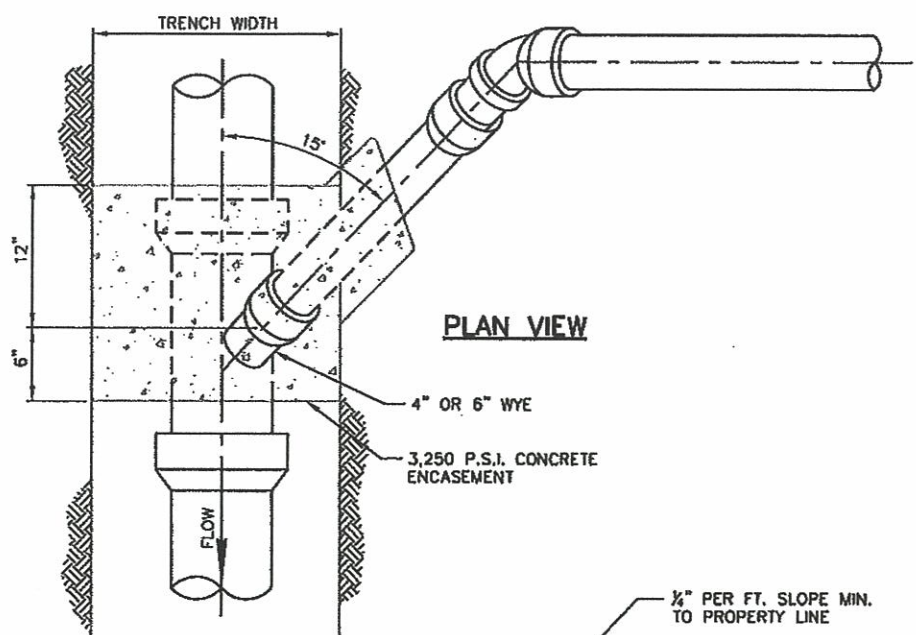
DATE 6-11-09

STD. DWG.

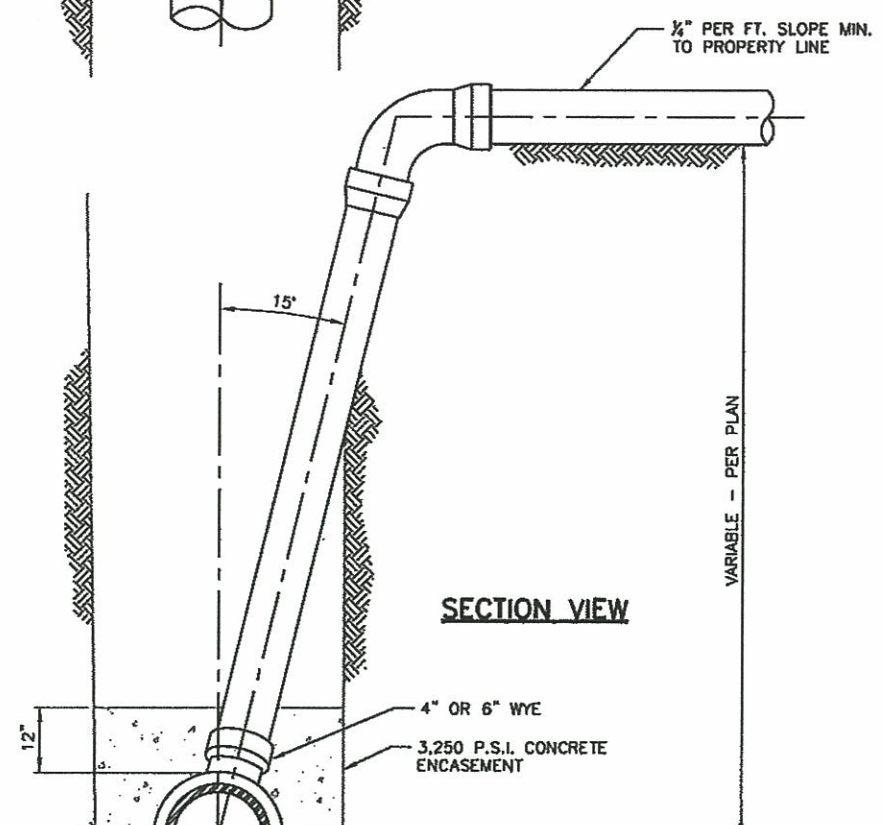
201

SHT. 1 OF 1

c:\codd\codd\codd drawings\codd aid\dwg\hwy\hwy\codd_std_201



PLAN VIEW



SECTION VIEW

NOTES:

1. FOR DEEP CUT LATERAL GREATER THAN 8-INCH USE EPOXY LINED DUCTILE IRON AS SPECIFIED.
2. VERTICAL PIPE SHALL BE BRACED WHILE BACKFILLING TRENCH.
3. MODIFY CONNECTION PER DRAWING 203 FOR EXISTING MAIN CONNECTIONS

REV.	DESCRIPTION	DATE	APP'D

Cucamonga Valley Water District
DEEP CUT SEWER LATERAL

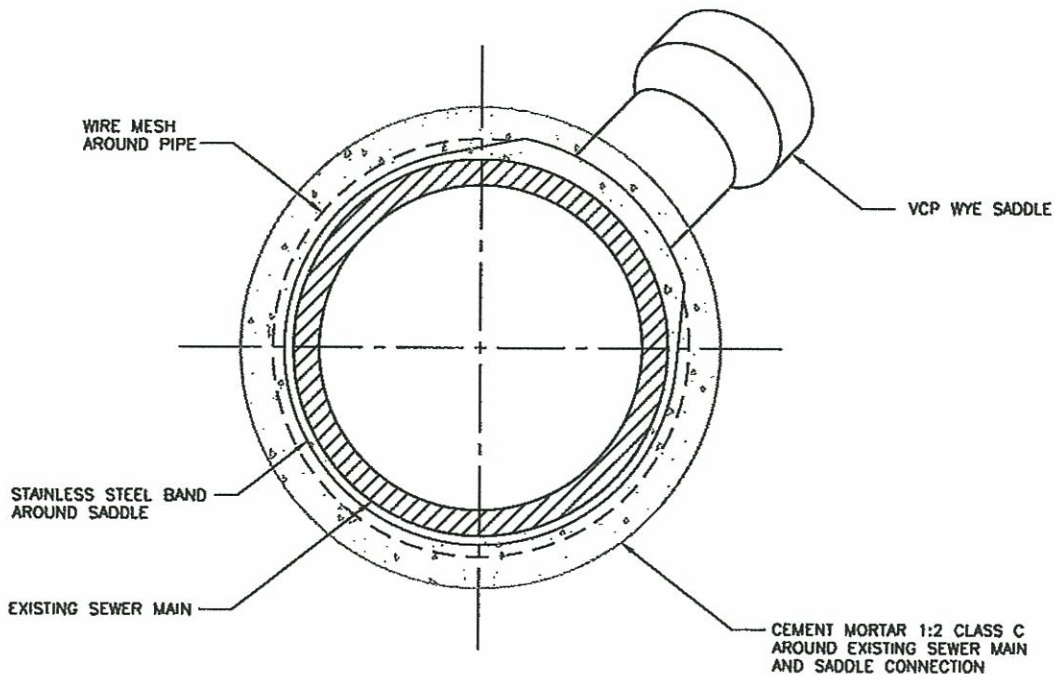
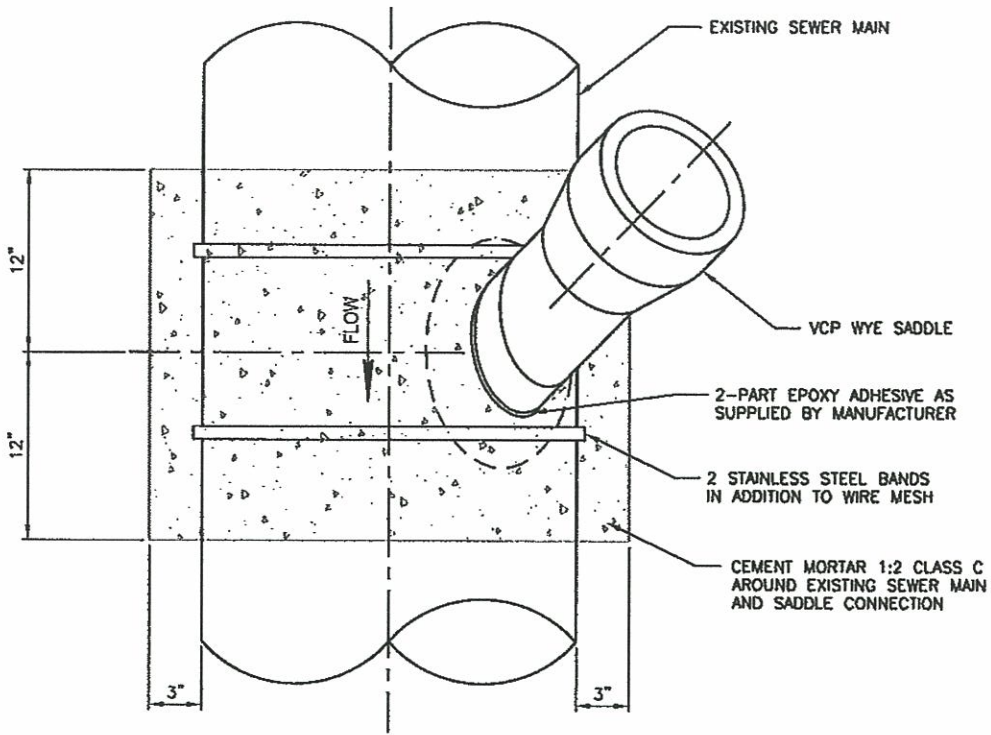
Cucamonga Valley Water District
 ENGINEERING DEPARTMENT
 10140 ASHFORD STREET, RANCHO CLAYMONGA, CA 91729
 (951) 537-2531

APPROVED BY:

JOHN BOSKER P.E., DIRECTOR OF OPERATIONS & ENGINEERING

DATE: **6-11-09**

STD. DWG.
202
 SHT. 1 OF 1



REV.	DESCRIPTION	DATE	APP'D

Cucamonga Valley Water District
VCP WYE SADDLE ON EXISTING MAIN

Cucamonga Valley Water District
 ENGINEERING DEPARTMENT
 10140 ASHFOOT STREET, RANCHO CLAYMONGE, CA 91729
 (909) 537-2531

APPROVED BY:

 JOHN BOSKER P.E., DIRECTOR OF OPERATIONS & ENGINEERING
 6-11-09
 DATE

STD. DWG.
203
 SHT. 1 OF 1